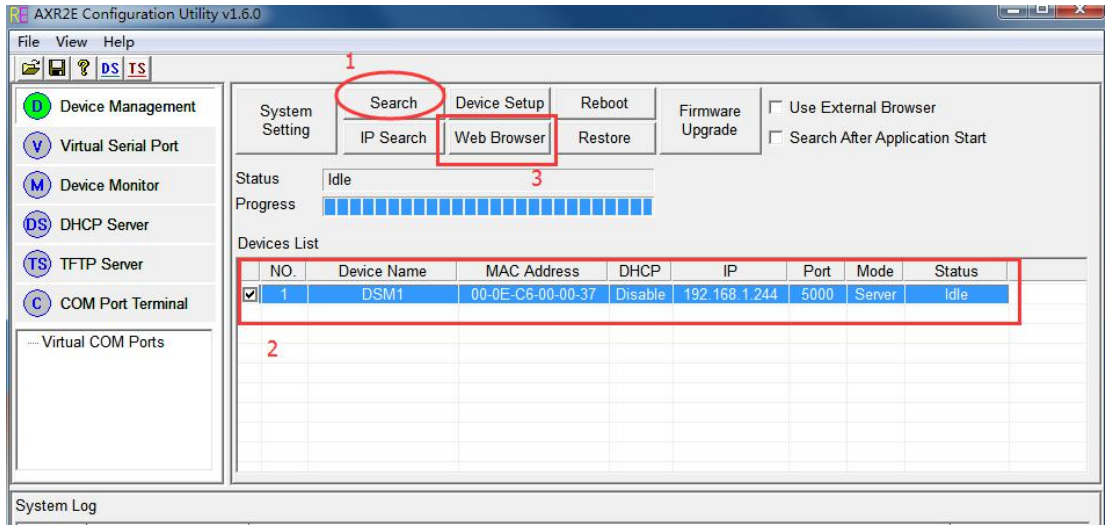
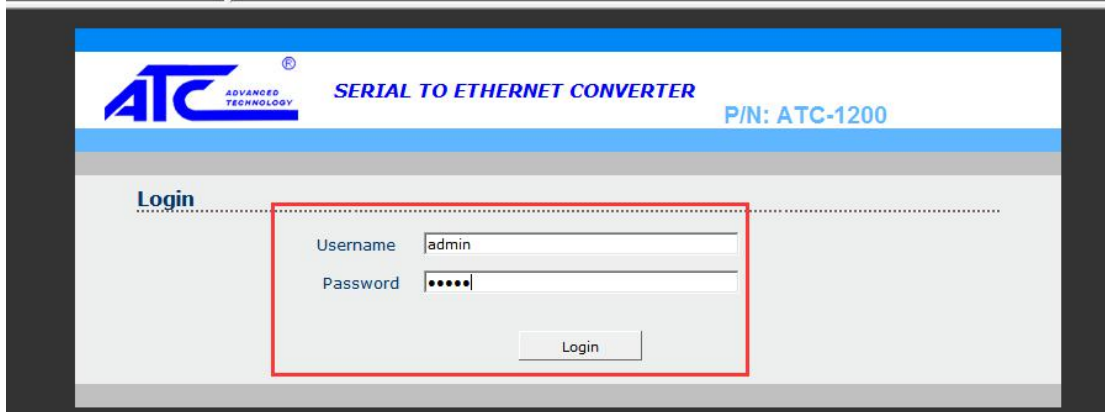
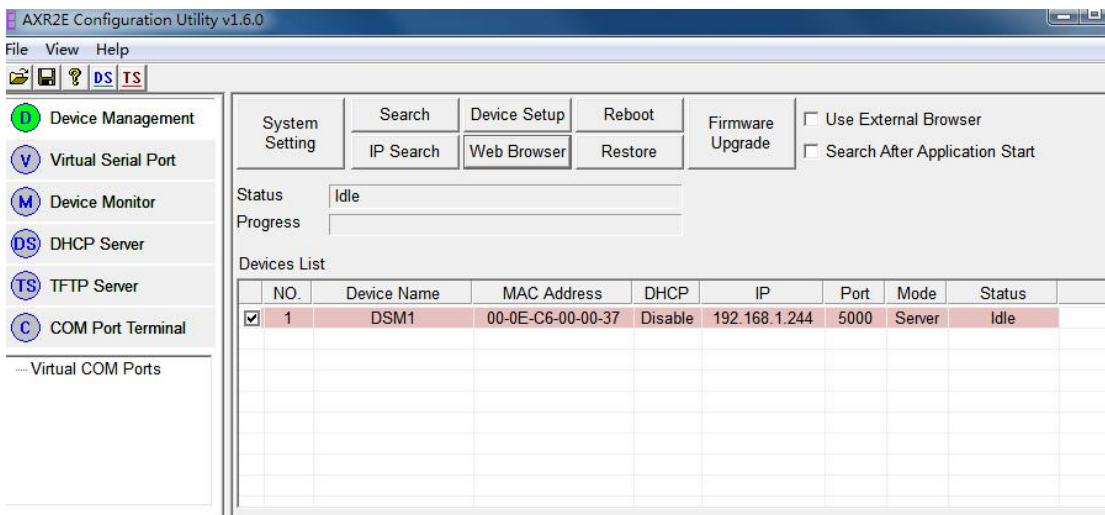


A-1200 Configuration Utility And Test.

1. Click Search button.



2. Click Web Browser button.



3. Log in A-1200 Web page.

Data Baud Rate 9600

Data Bits 8

Data Parity None

Stop Bits 1

Flow Control None

Serial Type RS485

Network Settings

DHCP Client Disable

Static IP Address 192.168.1.244

Static Subnet Mask 255.255.255.0

Static Default Gateway 192.168.1.1

Static DNS Server 168.95.1.1

Connection Type TCP

Transmit Timer 30

Server/Client Mode Server

Server Listening Port 5000

Client Destination Host Name/IP 192.168.1.199

Client Destination Port 9008

Buttons: Apply, Cancel, Reboot, Restore default

4. Add Virtual Serial Port.

AXR2E Configuration Utility v1.6.0

File View Help

Virtual Port / Network Configuration

Virtual Port Add

Network Connect

Virtual Port / Network Configuration

Connection Protocol TCP

Remote Host IP 192 . 168 . 0 . 2

Remote Host Port 5000

Mode Client

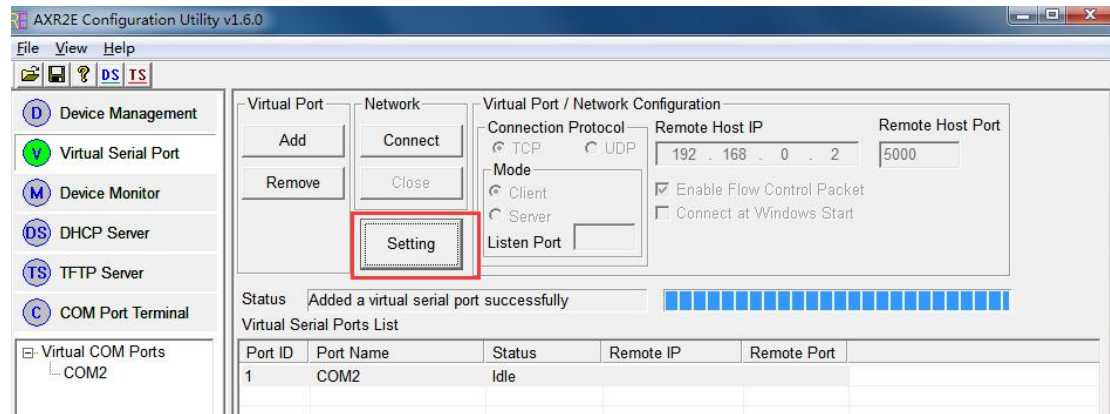
Enable Flow Control Packet

Connect at Windows Start

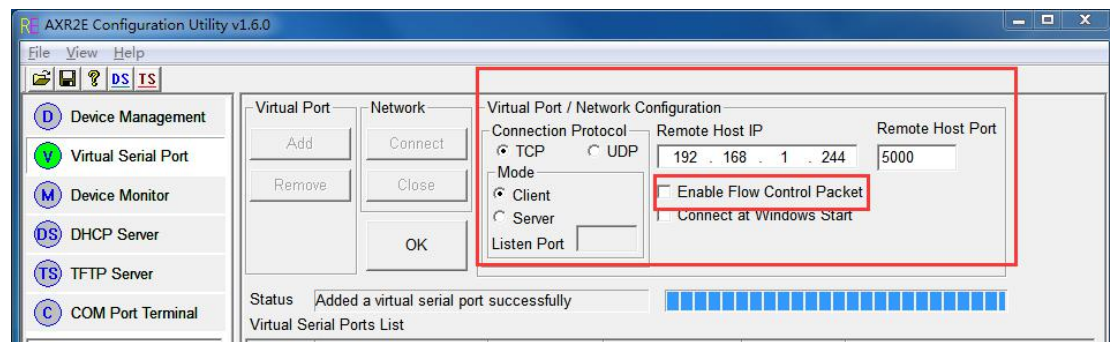
Status Added a virtual serial port successfully

Port ID	Port Name	Status	Remote IP	Remote Port
1	COM2	Idle		

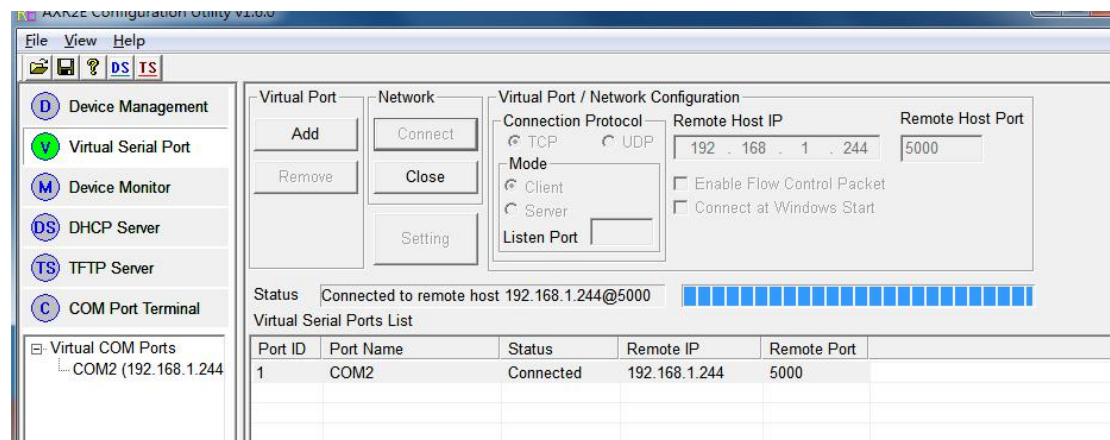
5. Click Setting button.



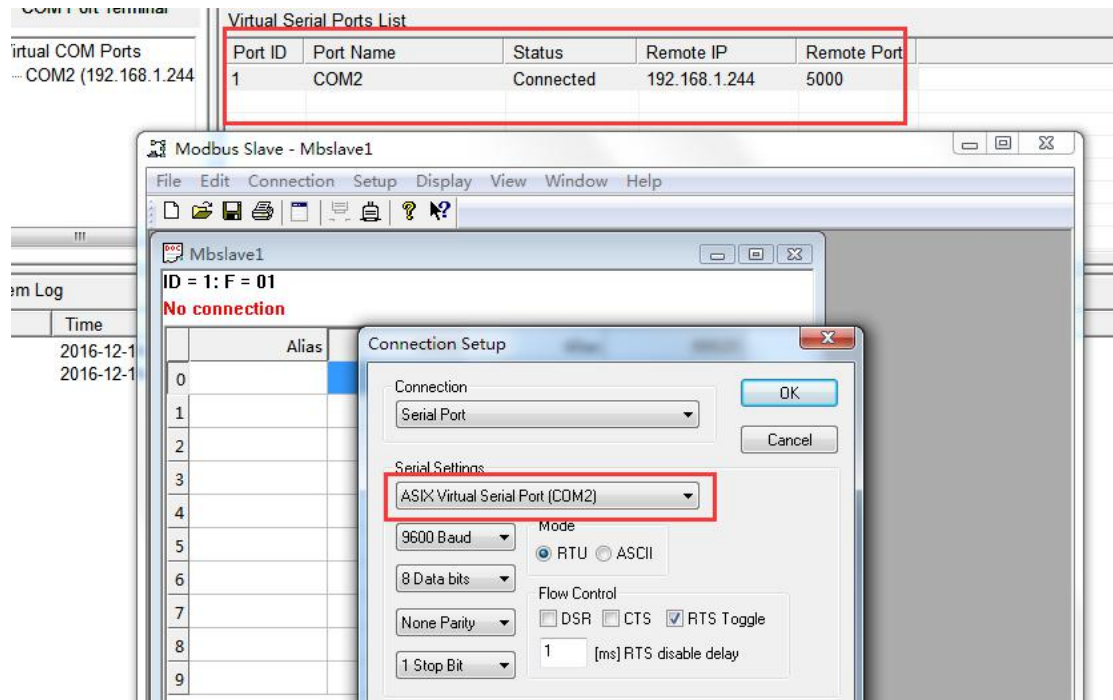
6. Configuration Virtual Serial Port.



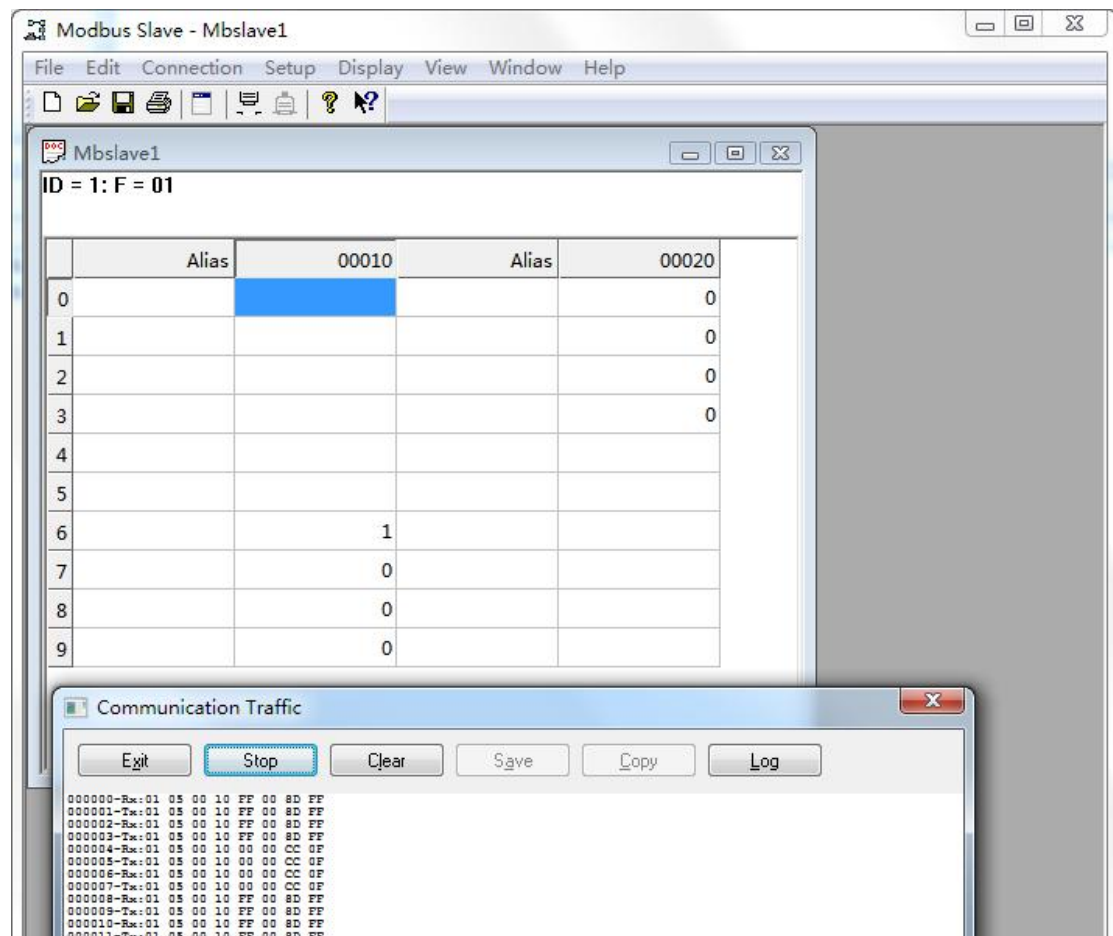
7. Then Click OK, and Click Connect button.



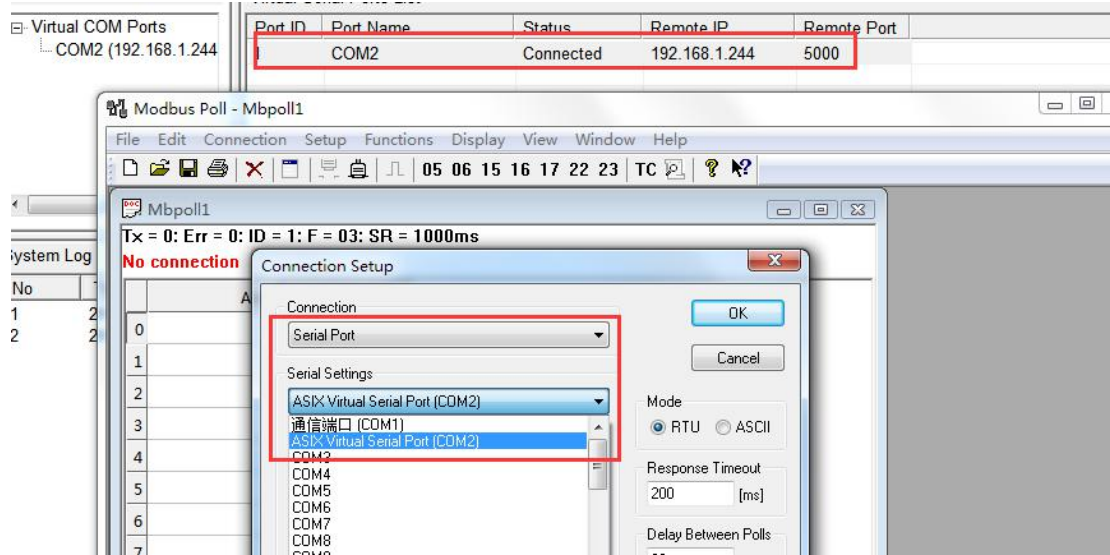
8. Use Modbus Slave test it through virtual serial port communicate with a PLC master station which using modbus RTU protocol.



9. It running well.



10. Use Modbus Poll test it through virtual serial port communicate with a I/O module slave station which using modbus RTU protocol.



11. It running well.

